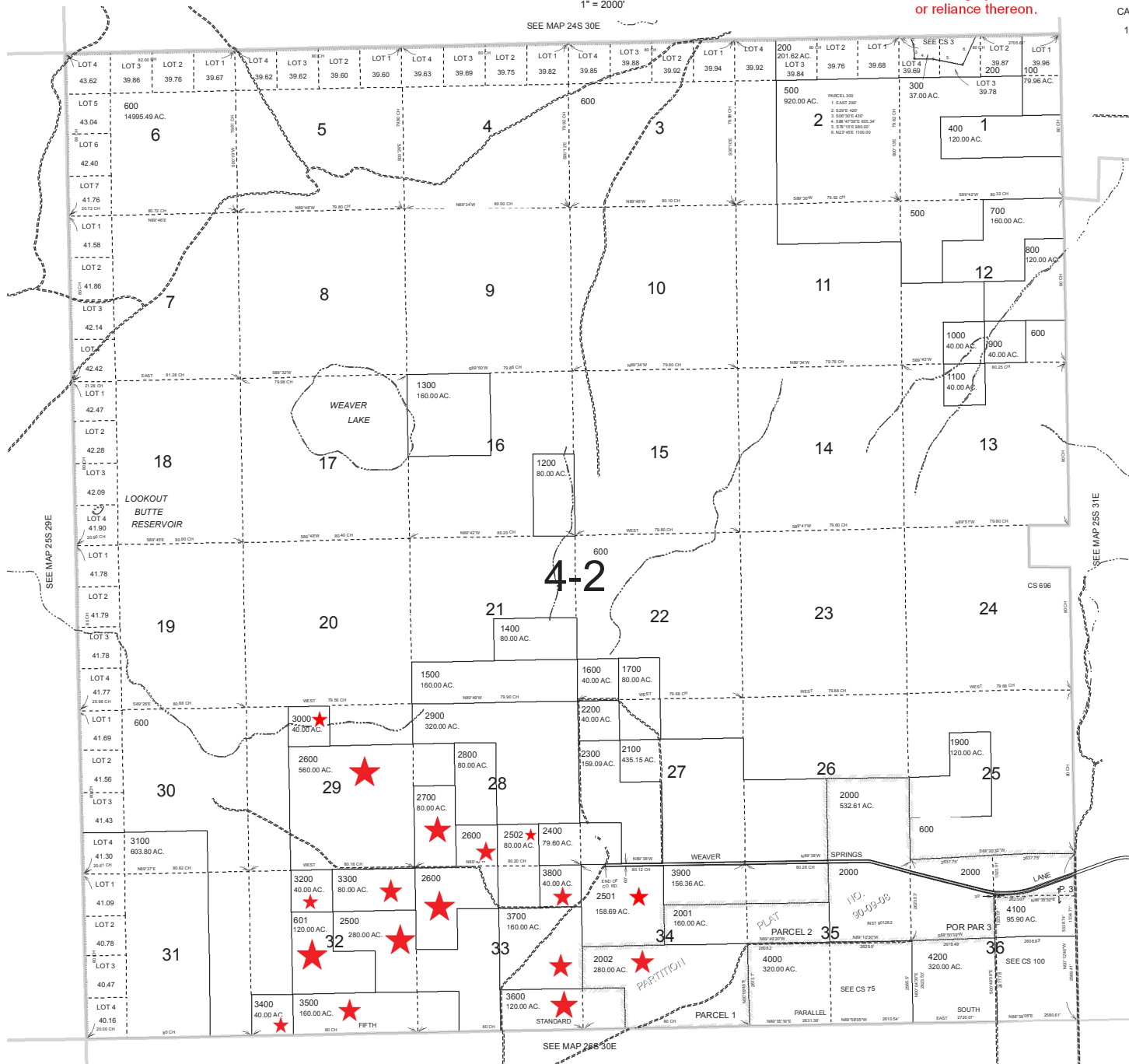


THIS MAP WAS PREPARED FOR
ASSESSMENT PURPOSE ONLY

T.25S. R.30E. W.M.
HARNEY COUNTY

1" = 2000'

SEE MAP 24S 30E



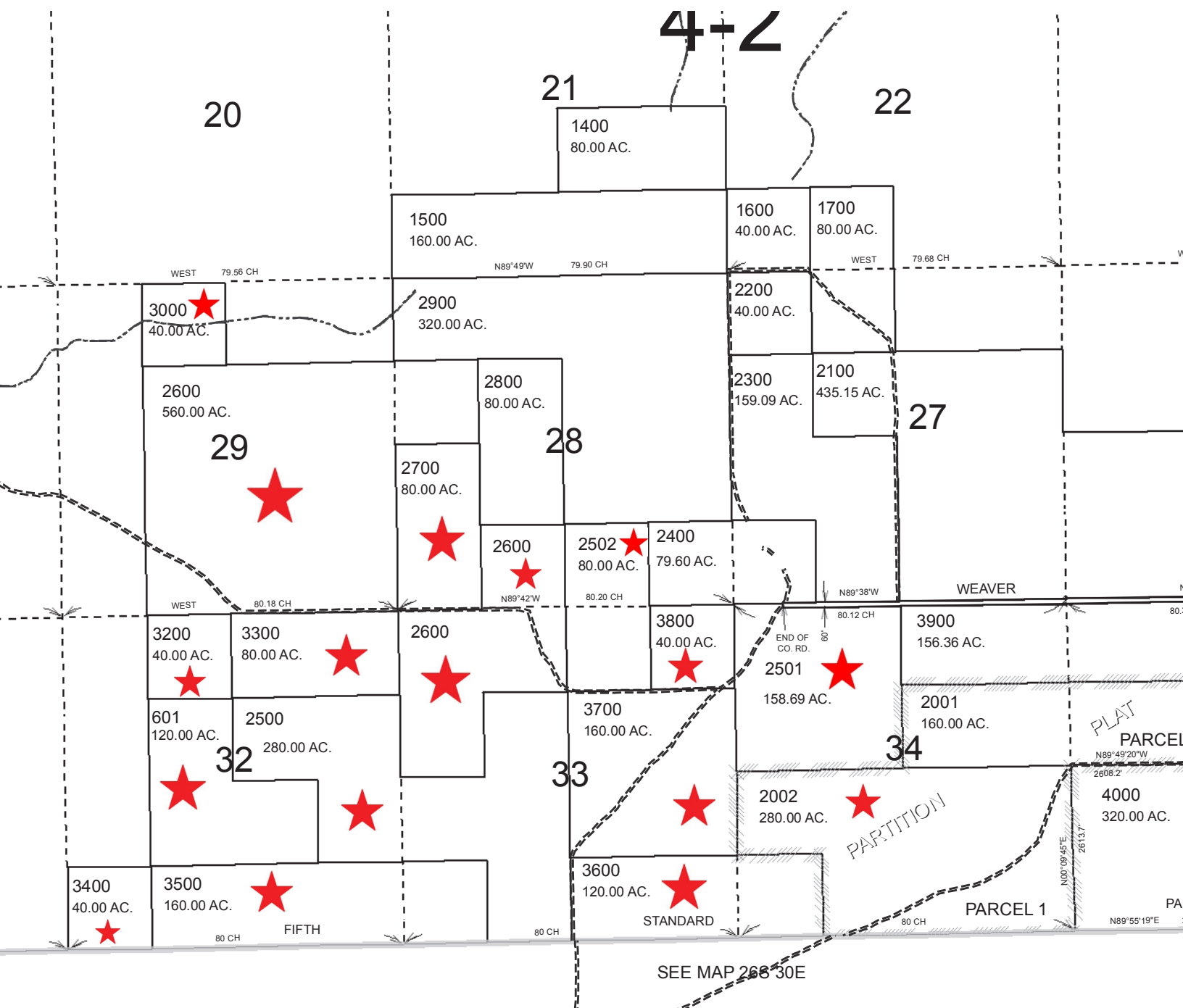
N
COMPLIMENTS OF
AmeriTitle

This sketch is furnished
for information purposes
only to assist in property
location with reference to
streets and other parcels.
No representation is
made as to accuracy and
the Company assumes no
liability for any loss
occurring by reason
or reliance thereon.

25S 30E

CANCELLED NO.
1800 (2013)

N
PRINTED ON
7/8/2014
25S 30E



THIS MAP WAS PREPARED FOR
ASSESSMENT PURPOSE ONLY

T.26S. R.30E. W.M. NORTH OF THE LAKE
HARNEY COUNTY

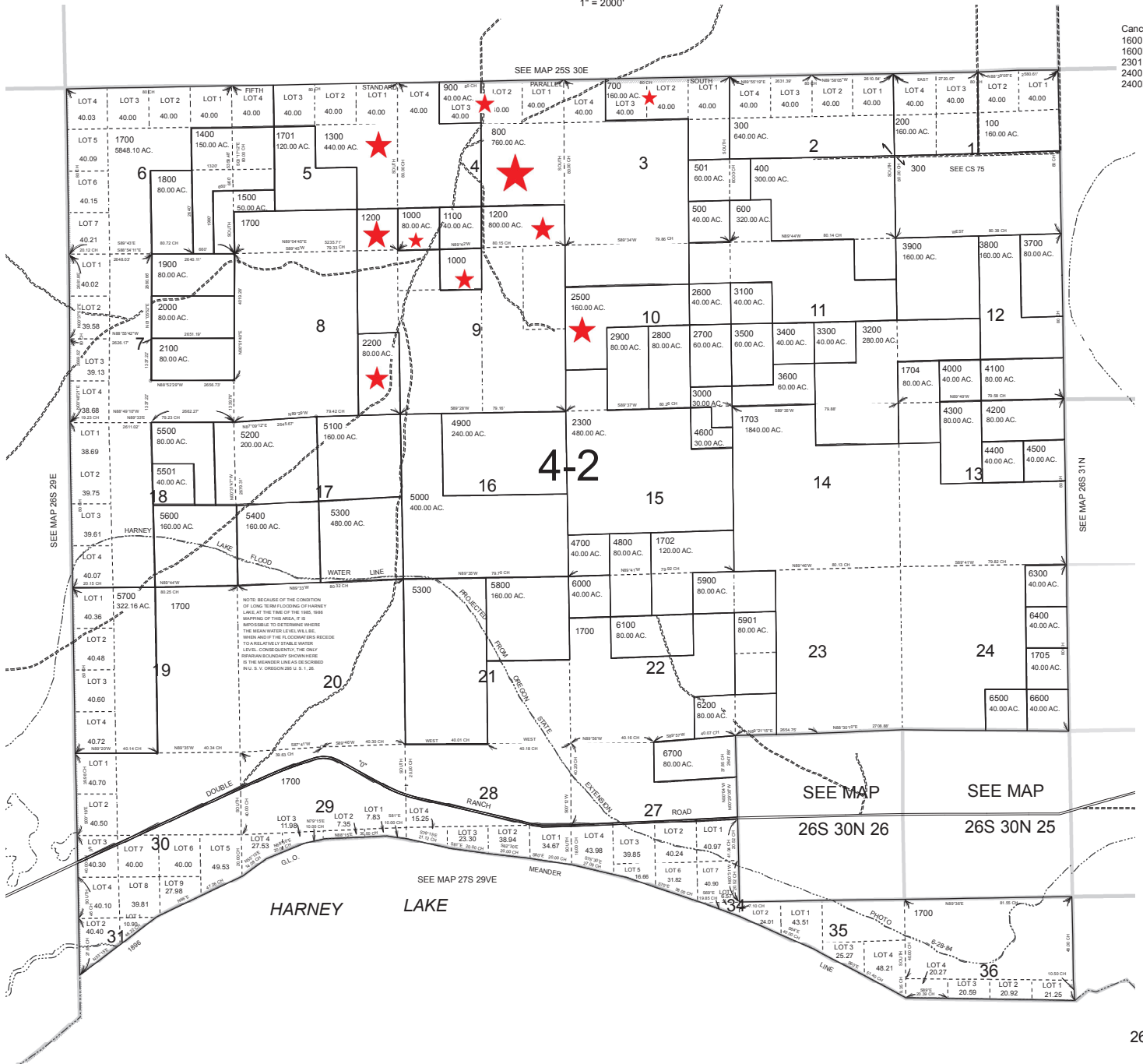
1" = 2000'

N
COMPLIMENTS OF
AmeriTitle

This sketch is furnished
for information purposes
only to assist in property
location with reference to
streets and other parcels.
No representation is
made as to accuracy and
the Company assumes no
liability for any loss
occurring by reason
or reliance thereon.

26S30NE

Cancelled Nos.
1600
1600M1
2301
2400
2400M1



N
PRINTED ON
3/16/2016

26S30NE



This sketch is furnished for information purposes only to assist in property location with reference to streets and other parcels.

No representation is made as to accuracy and the Company assumes no liability for any loss occurring by reason or reliance thereon.

HARNEY COUNTY

$$1'' = 2000'$$
